



# Bromstone Primary School & St.Mildred's Primary Infant School

## Complaint Policy

**Formulation date:** 1<sup>st</sup> September 2016

**Senior Team Responsibility:** Head of School

**Governors' Reviewing Committee:** Leadership and Management

**Approved on:** 18<sup>th</sup> January 2023

**Next Review Date:** February 2024

**Associated Documentation:**

## School Complaints Procedure

Our school is committed to providing the very best education for our young people and want our pupils to be healthy, happy and safe and to do well. We recognise the importance of establishing and maintaining good relationships with parents, carers and the wider community. We are aware that there may be occasions where people have concerns or complaints and the following procedure sets out the steps that should be followed in order to resolve these as quickly and informally as possible.

School governing bodies are required under Section 29 of the Education Act 2002 to have in place a procedure for dealing with complaints relating to the school, other than those covered by separate legislation and formal procedures and are covered by other policies and guidance. These include:

- Admissions
- Exclusions
- Special Educational Needs
- Staff Grievances / Discipline
- Child Protection
- Whistleblowing

It is expected that all complaints will be referred to the school in the first instance and that all stages will be pursued before considering a referral to the Secretary of State for Education (DfE Complaints Unit) if a complainant feels that their complaint has not been dealt with appropriately or remains unresolved.

Complainants are encouraged to follow through each stage of the procedure, as appropriate, in order to resolve their concerns.

---

### **Aims and principles of the policy**

This policy aims to:

- Encourage the resolution of concerns and complaints by informal means wherever possible
- Ensure that concerns are dealt with quickly, fully and fairly within defined time limits wherever possible
- Provide effective and appropriate responses to concerns and complaints
- Maintain good relationships between the school and all those involved

Key principles of this policy are:

- **Accessibility** – the policy will be available on the school's website and also can be requested from the school office. It will be in a useable format, free from jargon and will assume no specialist knowledge
  - **Good communication** – the school will be happy to explain the process for dealing with concerns and complaints
  - **Timescales**- there will be clear timescales which the school will make every effort to adhere to. Where timescales have to change, we will ensure complainants are advised of the delay and reasons for this and are given clear revised timescales.
  - **Clarity** – over roles and responsibilities of those involved in the process and clarity around the desired outcome for the complainant
  - **Confidentiality**- appropriate confidentiality will be maintained by all those involved (including and school staff and governors).
-

Where concerns are raised, the school intends for these to be dealt with fairly, openly and promptly. The governing body has approved the following procedure which explains what you should do if you have any concerns about the school.

Where appropriate, the school may offer mediation to resolve a concern or complaint at any stage of the process. The school may also use someone independent from the school to investigate a complex issue and to report back to the Executive Headteacher, Chair of Governors or Governor Complaints Panel (depending on which the stage of the process the complaint is being dealt with).

The governing body will appropriately monitor the nature of the complaints received over each academic year to inform practice and potential improvements to procedures and policies within the school.

## **Raising Concerns**

The majority of concerns can be dealt with without resorting to the complaints procedure. Where you have a concern or query about any aspect of the school or your child's education or wellbeing, raise this with your child's class teacher in the first instance. Ideally they will be able to address your concerns immediately or can arrange a meeting with you to discuss the issue.

All concerns will be dealt with confidentially, although it may be necessary to take notes if the matter may need to be taken further or may arise again in the future.

## **Safeguarding**

Wherever a complaint indicates that a child's wellbeing or safety is at risk, the school is under a duty to report this immediately to the local authority. Any action taken will be in accordance with the school's safeguarding policy.

## **Social Media**

In order for complaints to be resolved as quickly and fairly as possible, we ask that complainants do not raise concerns or discuss them publicly via social media. Complaints will be dealt with confidentially by the school and we expect complainants to observe confidentiality also.

## **Complaints that result in staff capability or disciplinary**

If at any formal stage of a complaint it is determined that staff disciplinary or capability proceedings are necessary, the details of any action will remain confidential to the Executive Headteacher and/or the individual's line manager. The complainant is not entitled to participate in the process or receive any detail about the proceedings.

## **Complaints about the Executive Headteacher or the governors**

Where a complaint concerns the Head of School, the complainant should first approach the Executive Headteacher in an attempt to resolve the issue informally. If the complainant is not satisfied with this outcome they should notify the clerk to the governors that they wish to take a complaint forward. The Stage 3 process will then commence and the Chair of Governors will take the process forward.

Where a complaint concerns a governor, the same process applies as for the Executive Headteacher. Where a complaint concerns the Chair of Governors the procedure at Stage 3 will apply but the Vice Chair or an independent investigator will take the process forward.

## Upholding or not upholding complaints

At each stage of the complaints procedure the conclusion will be either:

- That the complaint is upheld (in part or in full) and where appropriate, some form of action is taken or recommendation made **OR**
- That the complaint is not upheld and reason(s) for this, where appropriate, are clearly given

The complainant may choose to take no further action or take their complaint to the next stage.

## The Stages of the Complaints Process

*(flowchart of process at appendix 2)*

### Stage 1 – Informal Complaint

Please start by telling the class teacher about your concern. This is usually the best and quickest way of resolving issues. In some cases the class teacher may feel it more appropriate to refer you to a more senior or experienced member of staff who will try to resolve the concern informally.

- *It is recommended that you make an appointment to speak to the class teacher as soon as possible as this will give both parties the opportunity to talk about the issue without being interrupted*
- *It is important to recognise that schools are busy organisations and may not be able to offer an appointment straight away*
- *The purpose of this meeting should be to establish the nature of the concern and to seek a resolution to the problem*
- *It is good practice for the class teacher to make a brief written record of the concerns raised and any actions agreed*
- *They may need to carry out an investigation or talk to others before they can respond to you. You should be given a timescale for a response, 5 working days.*

### Stage 2 – Formal Written Complaint (non- parental complaints are likely to go straight to this stage)

If you feel dissatisfied with the outcome of discussions with the class teacher, you should then contact the Executive Headteacher (*or Head of School, or member of the Senior Leadership Team*) either by arranging an appointment to see them or by putting your complaint in writing. *You may use the form attached as appendix 1 to do this.*

If you are not using the form, your letter should set out clearly the concern and why you feel the issue has not been resolved through informal channels. It is also helpful if you can set out what resolution you are seeking.

- The Executive Headteacher will consider the complaint and in doing so will:
  - Establish what has happened so far, and who has been involved;
  - Meet or contact you if they need further information;

- Clarify what you feel would put things right if this has not been set out in your letter or included on your form;
  - Interview those involved in the matter and those complained of, allowing them to be accompanied if they wish;
  - Conduct any interviews with an open mind;
  - Keep notes of any interview for the record
- The Executive Headteacher will keep in mind ways in which the complaint can be resolved. It may be sufficient to acknowledge that the complaint is valid in whole or in part. In addition, it may be appropriate to offer one or more of the following:
    - an apology
    - an explanation
    - an admission that the situation could have been handled differently or better (please note this is not an admission of negligence)
    - an assurance that the event complained of will not recur
    - an explanation of the steps that have been taken to ensure that it will not happen again
    - an undertaking to review policies and practice in light of the complaint

It may also be the case that the complaint may not have any substance and is therefore considered to be unfounded or unsubstantiated.

The Executive Headteacher will discuss the outcome of their consideration of your complaint with you and should send a detailed response within a maximum of 20 school days. Where this proves to be unrealistic, you will be informed in writing and given an estimate of how long it will take to provide a detailed response.

Where you are unhappy about the decision the Executive Headteacher has made about your complaint, this does not become a complaint about the Executive Headteacher. However, you will be advised of your entitlement to take your original complaint to the next stage by writing to the clerk to the governing body as soon as possible after receiving the decision, briefly outlining the content of the complaint and requesting that a governor complaints panel is convened.

### **Stage 3 – Governor Review Panel<sup>1</sup>**

If you are not satisfied with the response of the Executive Headteacher, or you have a concern or complaint that is specifically about the Executive Headteacher which has not been resolved informally, then you must write a formal letter of complaint to the Chair of Governors. The school will provide you with the Chair of Governors name, or you can find it on the school's website. You should either complete the complaints form or write to the Chair of Governors at the school address, marking any envelope "urgent, private and confidential".

- *The Clerk to the Governing Body will acknowledge receipt of the letter within 5 school days. The acknowledgement will inform the complainant that three members of the school's governing body will hear the complaint within 20 working days of receiving the complaint. The letter will invite the complainant to attend and explain that the complainant has the right to submit any further documentation relevant to the complaint. The complainant may bring a friend or someone else for support.*
- *For complaints specifically about the Executive Headteacher, the Chair of Governors will arrange for the complaint to be investigated, either by him/herself or by an appropriate independent investigator.*
- *A meeting of the Governors Complaints Panel will be convened. No governors with prior*

*involvement in the issues complained about will be included on the panel and it may be necessary to use reserves (previously agreed by the Governing Body) to ensure the Panel can meet within the set time. An experienced governor will chair the panel meeting. The chair/clerk of the complaints panel will contact the complainant with the arrangements.*

- *Once the panel has been held, the complainant and the school will be informed of their decision within five school working days. If it is not possible to meet these timescales then the chair of the panel will contact will contact both parties to discuss a mutually convenient date. Further information on how the panel operates and the process is attached at appendix 3.*

#### **Stage 4 – Escalation to Secretary of State for Education**

If the complainant remains unsatisfied by the outcome of the governor's panel, they will be advised to contact the Secretary of State for Education. The Secretary of State has a duty to consider all complaints raised but will only intervene where the governing body has acted unlawfully or unreasonably.

The School Complaints Unit considers complaints relating to local authority maintained schools in England on behalf of the Secretary of State. They will look at whether the school's complaints policy and other relevant statutory policies were adhered to. They will also check whether the school's policy adheres to education legislation. However the unit will not re-investigate the substance of the complaint. This remains the responsibility of the school. If the Schools Complaints Unit finds that the school has not handled a complaint in accordance with its procedure, the unit may request that the complaint is looked at again.

The School Complaints Unit can be contacted by calling the national helpline on 0370 000 2288 or by going online at: [www.education.gov.uk/help/contactus](http://www.education.gov.uk/help/contactus) or by writing to:

Department for Education  
Department for Education  
Piccadilly Gate  
Store Street  
Manchester  
M1 2WD.

## Policy for unreasonable complainants

Our school is committed to dealing with all complaints fairly and impartially, and to providing a high quality service to those who complain. We will not normally limit the contact complainants have with the school. However, we do not expect our staff to tolerate unacceptable behaviour and will take action to protect staff from that behaviour, including that which is abusive, offensive or threatening.

The school defines unreasonable complainants as '*those who, because of the frequency or nature of their contacts with the school, hinder our consideration of their or other people's complaints*'.

### **Examples: A complaint may be regarded as unreasonable when the person making the complaint:**

- refuses to articulate their complaint or specify the grounds of a complaint or the outcomes sought by raising the complaint, despite offers of assistance;
- refuses to co-operate with the complaints investigation process while still wishing their complaint to be resolved;
- refuses to accept that certain issues are not within the scope of a complaints procedure;
- insists on the complaint being dealt with in ways which are incompatible with the adopted complaints procedure or with good practice;
- introduces trivial or irrelevant information which the complainant expects to be taken into account and commented on, or raises large numbers of detailed but unimportant questions, and insists they are fully answered, often immediately and to their own timescales;
- makes unjustified complaints about staff who are trying to deal with the issues, and seeks to have them replaced;
- changes the basis of the complaint as the investigation proceeds;
- repeatedly makes the same complaint (despite previous investigations or responses concluding that the complaint is groundless or has been addressed);
- refuses to accept the findings of the investigation into that complaint where the school's complaint procedure has been fully and properly implemented and completed including referral to the Department for Education;
- seeks an unrealistic outcome;
- Makes excessive demands on school time by frequent, lengthy, complicated and stressful contact with staff regarding the complaint in person, in writing, by email and by telephone while the complaint is being dealt with.

### **A complaint may also be considered unreasonable if the person making the complaint does so either face-to-face, by telephone or in writing or electronically:-**

- maliciously;
- aggressively;
- using threats, intimidation or violence;
- using abusive, offensive or discriminatory language;
- knowing it to be false;
- using falsified information;

- Publishing unacceptable information in a variety of media such as in social media websites and newspapers.

Complainants should limit the numbers of communications with a school while a complaint is being progressed. It is not helpful if repeated correspondence is sent (either by letter, phone, email or text) as it could delay the outcome being reached.

Whenever possible, the Executive Headteacher or Chair of Governors will discuss any concerns with the complainant informally before applying an 'unreasonable' marking.

If the behaviour continues the Executive Headteacher will write to the complainant explaining that their behaviour is unreasonable and asking them to change it. For complainants who excessively contact the school causing a significant level of disruption, we may specify methods of communication and limit the number of contacts in a communication plan. This will usually be reviewed after 6 months.

In response to any serious incident of aggression or violence, the concerns and actions taken will be put in writing immediately and the police informed. This may include banning an individual from school premises.

### **Barring from the School Premises**

Although fulfilling a public function, schools are private places. The public has no automatic right of entry. Schools will therefore act to ensure they remain a safe place for pupils, staff and other members of their community.



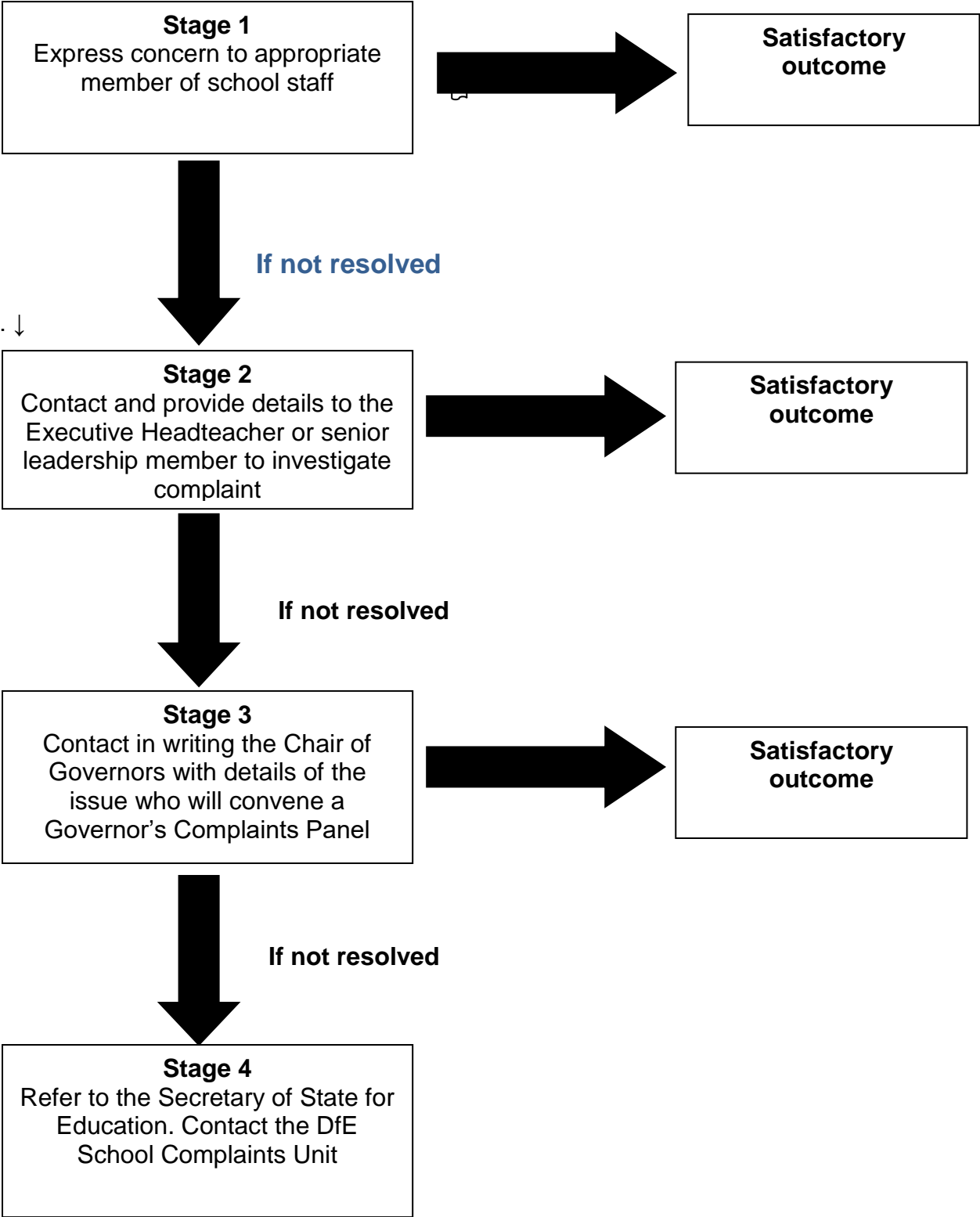
If a parent's behaviour is a cause for concern, a school can ask him/her to leave school premises. In serious cases, the Executive Headteacher or the local authority can notify them in writing that their implied licence to be on school premises has been temporarily revoked subject to any representations that the parent may wish to make. Schools should always give the parent the opportunity to formally express their views on the decision to bar in writing. The decision to bar should then be reviewed, taking into account any representations made by the parent, and either confirmed or lifted. If the decision is confirmed the parent should be notified in writing, explaining how long the bar will be in place.

Anyone wishing to complain about being barred can do so, by letter or email, to the Executive Headteacher or Chair of Governors. However, complaints about barring cannot be escalated to the Department for Education. Once the school's own complaints procedure has been completed, the only remaining avenue of appeal is through the Courts; independent legal advice must therefore be sought.

## Complaints Form

Please complete and return to ..... who will acknowledge receipt and explain what action will be taken	
Your Name	
Pupil's Name	
Your relationship to the Pupil	
Address	
Postcode	
Daytime Tel Number	
Evening Tel Number	
Please give details of your complaint here	
What actions, if any have you taken to try and resolve your complaint	
What actions do you feel might resolve the problem?	
Are you attaching any paperwork?	
Signature	
Date	
<i>For Office Use only</i>	
Date acknowledgement sent	By Whom
Complaint referred to:	Date:

**Model Complaints Procedure Flowchart**



## Governor Complaints Panel procedure

- At the panel hearing:
  - The complainant will have the opportunity to present their complaint.
  - The Executive Headteacher will explain the school's position.
  - Those present will have the opportunity to ask questions.
  - Panel members will have the opportunity to ask questions of the complainant and the Executive Headteacher.
  - The Executive Headteacher will be given the opportunity to make a final statement to the panel.
  - The complainant will be given the opportunity to make a final statement to the panel.
  - The chair will ask the complainant if he or she feels they have had a fair hearing.
- The Chair of the Panel has responsibility to ensure that detailed minutes are taken.
- The Chair of the Panel will explain to the complainant and Executive Headteacher that the Panel will consider its decision and that a written decision will be sent to both parties within 15 working days. The complainant, Executive Headteacher, other members of staff and witnesses will then leave.
- The Panel will then consider the complaint and all the evidence presented and
  - Agree a decision on the complaint;
  - Decide upon the appropriate action to be taken to resolve the complaint; and
  - Where appropriate, suggest recommended changes to the school's systems or procedures to ensure that problems of a similar nature do not recur.
- A written statement clearly setting out the decision of the Panel must be sent to the complainant and Executive Headteacher. The letter to the complainant should also advise how to take the complaint further.
- The school should ensure that a copy of all correspondence and notes are kept on file in the school's records. These records should be kept separately from the pupil's personal records.